

**ABBYY®**



**ABBYY® Recognition Server 3.0**

**Quick Reference Card**

## Installing ABBYY Recognition Server



Select the **Install ABBYY Recognition Server 3.0** item on the Autorun menu, or run the Setup.exe file from the installation folder. Follow the instructions of the installation wizard.

All program components can be installed on the same or on different computers. Refer to the recommendations below:



**Server Manager** orchestrates the operation of the whole system and manages processing queues. Install on the server with sufficient disk space.



**Scanning Station** (optional) provides a scanning interface. Install on the computers of scanning operators.



**Processing Station** performs OCR and document conversion. Install on powerful servers (OCR is a resource-intensive process!).



**Verification Station** (optional) provides an interface for proofreading the OCR results. Install on the computers of verification operators.



**Indexing Station** (optional) provides an interface for assigning types and attributes to documents. Install on the computers of indexing operators.



**Remote Administration Console** provides an interface for setting up and monitoring the system. Install on the administrator's computer.

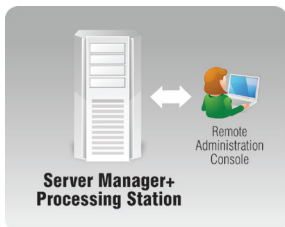


**COM-based API** (optional) is used for integrating Recognition Server with other applications. Deploy as part of the client application.

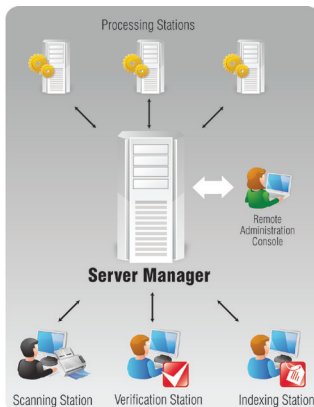


**Web Service** (optional) allows using Recognition Server from within other services and applications. Install on the IIS server.

### Minimal single-server configuration:



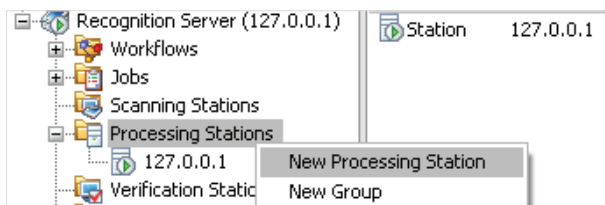
### Distributed configuration:



## Getting Started

Plug in your hardware dongle in a USB slot. If you have a software license, you will be prompted to enter and activate it when you run the Remote Administration Console for the first time.

If you have installed the Processing Stations on different servers, you will need to connect them to the Server manager:

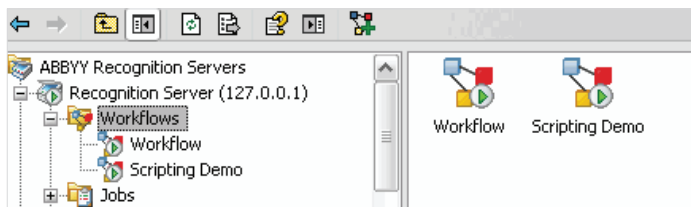


If the system components do not run properly, refer to the Server Log for possible error messages.



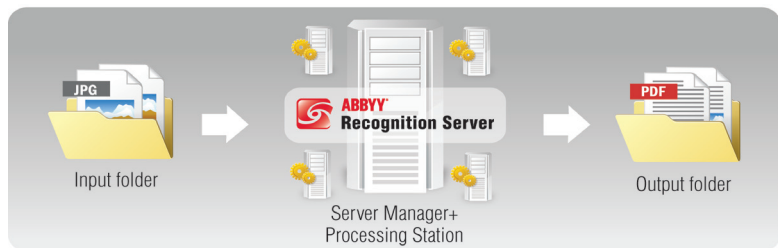
## Sample Workflows

ABBYY Recognition Server processes documents based on workflows (each workflow is a set of processing settings). Two sample workflows are provided for your convenience, so that you can start processing documents right away.



### Default workflow

This is an example of the simplest Recognition Server workflow. It imports image files from the Input folder (which is located in Start > All Programs > ABBYY Recognition Server 3.0 > Default Workflow\Input Folder), converts them to Searchable PDF, and saves into the Output Folder (Start > All Programs > ABBYY Recognition Server 3.0 > Default Workflow\Output Folder).



Use the **Sample.tif** image from the Samples subfolder to test this workflow, or scan documents on the Scanning Station and export them into the Default Workflow. (Note that the English OCR language is used by default.)

While a document is being processed by Recognition Server, you can view its status in the Jobs node of the Remote Administration Console:

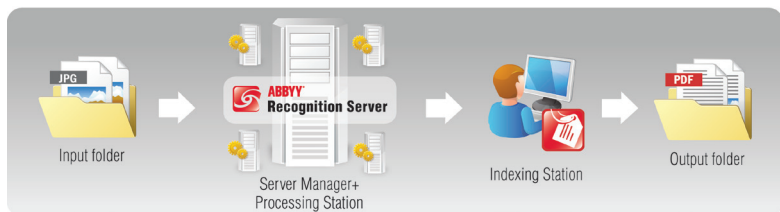
Files	Date	State	Workflow
sample.tif	19.02.2010 2...	Queued for ind...	Workflow

The list of already processed jobs is shown in the **Job Log**.

### Scripting Demo workflow

This is a more complex workflow that demonstrates the most important functionality available in Recognition Server. In accordance with this workflow, Recognition Server:

1. Imports a batch of image files from the Input folder
2. Performs OCR using the English OCR language
3. Separates the batch into documents according to a scripted rule: detects a separator page by the text printed on it, starts a new document once the separator page is detected, and deletes the separator page
4. Detects document types by the text printed on the deleted separator pages.
5. For the “Brochure” document type, it automatically fills out the only attribute, “Product name,” based on the words found in the recognized text of the document. Then it queues the “Resumé” and “Article” document types for manual indexing.
6. The indexing operator fills out the attributes for resumé and articles on the Indexing Station.
7. All documents are converted to Searchable PDF and saved to the Output folder, with meaningful filenames (for each document type, different attribute values are used as the filename). The information about the types and attributes is saved in TXT files.



Use the batch from the Samples\SampleImages\ScriptingBatch subfolder to test this workflow.

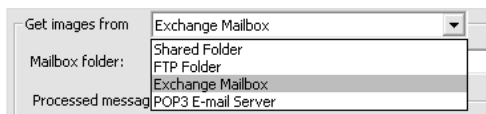
## Creating a workflow to process e-mail messages

With ABBYY Recognition Server, you can set up a workflow to monitor a specific mailbox and OCR images coming in as e-mail attachments. Thus, users can send their documents to the OCR server's e-mail address and receive recognized files in reply.

1. In the menu of the **Workflows** node, select the **New Workflow** item.

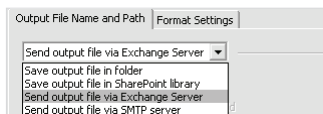


2. On the **Input** tab in the **Get images from...** box, select either **Exchange Mailbox** or **POP3 E-mail Server**, depending on the type of mail server used in your organization.



Set up the server and mailbox parameters. We recommend that you assign a dedicated mailbox to Recognition Server.

3. On the **Process** tab, select the appropriate recognition languages.
4. On the **Output** tab, create a new output format or select one of the existing formats and click Edit... On the Output File Name and Path tab, select a delivery method: Exchange Server or SMTP server. Configure the server parameters.



**Note:** To work with Microsoft Exchange Server, the Server Manager service must run under a domain user account. See the Administrator's Guide for details.

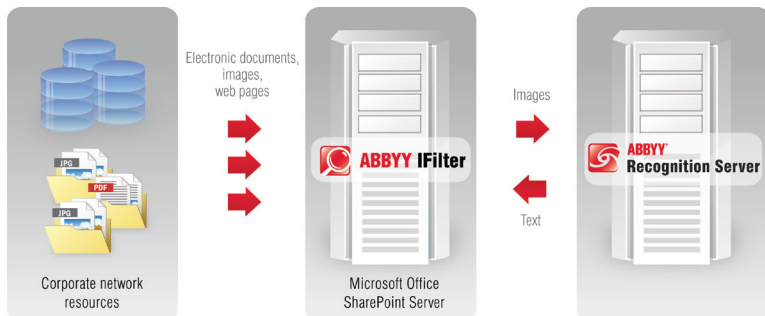
## Connectors to Microsoft® Search

ABBYY Recognition Server provides a special connector (IFilter) that enables Microsoft Office SharePoint® Server and Windows® Desktop Search to perform full-text searches in image documents in TIFF, JPEG, PDF, and DjVu formats. Using the IFilter, the Microsoft search systems can employ ABBYY Recognition Server to capture data from image files.

### Integration with Microsoft Office SharePoint Server

The Microsoft Office SharePoint Server crawler automatically crawls document libraries and indexes new or recently changed documents on a regular basis. Documents with image content that cannot be indexed are sent to ABBYY Recognition Server for OCR.

ABBYY Recognition Server recognizes the documents and returns the resulting text to Microsoft Office SharePoint Server for indexing. Thus, the documents become available for full-text search.



To install the IFilter for Microsoft Office SharePoint Server:

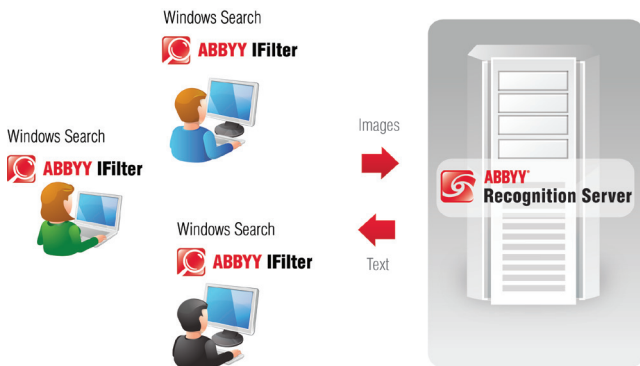
1. When installing the **Server Manager** component, select the **IFilter Support** sub-feature. A special hidden workflow will be created for processing images from within SharePoint.
2. Install the **IFilter** on top of SharePoint Server (Click on the **ABBYY Recognition Server 3.0 IFilter** item on the Autorun menu, or run the setup.exe file from the **ABBYY Recognition Server 3.0 IFilter** subfolder.)
3. Select the appropriate OCR languages in the IFilter Properties dialog that is opened after the installation.

For detailed instructions, see the Administrator's Guide.

## Integration with Windows Desktop Search

Windows Search automatically checks the specified folders and storages located on the user's computer for new items. The contents of text files are indexed automatically by Windows Search, while the ABBYY Recognition Server IFilter is used to extract data from image files. The IFilter transfers image files to ABBYY Recognition Server installed on the Local Area Network.

ABBYY Recognition Server then recognizes the image files and sends the results to Windows Search for indexing. Once indexed, the documents are available for full-text search.



To integrate Recognition Server with the IFilter for Windows Desktop Search:

1. When installing the **Server Manager** component, select the **IFilter Support** sub-feature. A special hidden workflow will be created for processing images from within Windows Desktop Search clients.
2. Install the **IFilter** on each computer with Windows Desktop Search (Click on the **ABBYY Recognition Server 3.0 IFilter** item on the Autorun menu, run the **setup.exe** file from the ABBYY Recognition Server 3.0 IFilter subfolder, or deploy the software automatically as described in the Administrator's Guide.)
3. Users may select OCR languages appropriate for their documents in the IFilter Properties window (**Start > Programs > ABBYY Recognition Server 3.0 > Configure IFilter**).

For detailed instructions, see the Administrator's Guide.